

SNE-TI Series



SNELR-TI



SNEL-TI

PRODUCT SPECIFICATION

SNELR-TI | SNEL-TI
SNE-S-TI | SNE-TI

Materials Lens-Tempered glass, Filter-PC, Housing-Al, Protection cage-STSS316L, Reflector-PC, Reflector-Heat resistant ABS, Bracket-STSS316L

Ambient operating temperature

$-40^{\circ}\text{C} \leq T_{\text{amb}} \leq +60^{\circ}\text{C}$

Protection rating

IECEX - Ex db IIC T6 Gb,

Ex db op is IIC T6 Gb, IP66

ATEX - II 2G Ex db IIC T6 Gb

II 2G Ex db op is IIC T6 Gb, IP66

Certificates IECEX, ATEX

Cable entry 1/2" NPT

Housing standard color MUNSSELL No. 7.5BG 7/2

- Light weight and compact explosion proof warning lights with a variety of light source selections from bulb, LED, and xenon lamp
- Telephone Initiated Signal beacon triggers lighting that is activated by 25Hz telephone ring signal
- Highly noticeable Telephone alarm in noisy environment
- Telephone line(2 LINE) is connected to PSTN telephone line
- A variety of light source selections from bulb, LED, and xenon lamp
- Aluminum housing provides excellent durability
- Fully enclosed structure with protection rating of IP66
- Integrated housing and terminal box model
- Rated power when telephone lines are not in use: 45VDC - 55VDC
- Rated power when telephone rings : AC25V-AC120V, Frequency 15-55Hz

SNELR-TI LED Revolving Signal Beacon

Model number	Voltage	Current	Certificates	Weight	Color
SNELR-TI	DC12V	170mA		3.15kg	<div>● R-Red</div> <div>● A-Amber</div> <div>● G-Green</div> <div>● B-Blue</div>
	DC24V	120mA		3.15kg	
	AC120V	45mA		3.85kg	
	AC230V	40mA		3.85kg	

- Excellent omni-directional visibility with LED light collecting system and special multifaceted reflector
- Revolving speed: 120-140RPM



SNEL-TI LED Steady/Flashing Signal Beacon

Model number	Voltage	Current	Certificates	Weight	Color
SNEL-TI	DC12V	150mA		3.65kg	<div>● R-Red</div> <div>● A-Amber</div> <div>● G-Green</div> <div>● B-Blue</div>
	DC24V	90mA		3.65kg	
	AC120V	65mA		4.30kg	
	AC230V	25mA		4.30kg	

- Long-lasting high intensity LED light source, Suitable for applications where bulb replacement is hard
- Built-in steady/flashing selection switch
- Flashing rate: 60-80 flashes/min





SNE-S-TI Xenon Strobe Signal Beacon

Model number	Voltage	Current	Xenon lamp			Certificates	Weight	Color
			Spec	Standard	Parts no			
SNE-S-TI	DC12V	480mA	200V -350V	BGA2120 -BBC I type	47	 	3.60kg	● R-Red
	DC24V	300mA					3.60kg	● A-Amber
	AC120V	100mA					4.25kg	● G-Green
	AC230V	80mA					4.25kg	● B-Blue

- Lamp connector fastening structure allows for convenient lamp replacement
- Excellent long-distance visibility with strong strobe signal diffusion
- Flashing rate: 60-80 flashes/min

SNE-TI Bulb Revolving Signal Beacon

Model number	Voltage	Current	Bulb			Certificates	Weight	Color
			Spec	Standard	Parts no			
SNE-TI	DC12V	1.39A	12V15W	G23 15S	17	 	3.25kg	● R-Red
	DC24V	800mA	24V15W	G23 15S	18		3.25kg	● A-Amber
	AC120V	180mA	12V15W	G23 15S	17		3.95kg	● G-Green
	AC230V	95mA	12V15W	G23 15S	17		3.95kg	● B-Blue

- Excellent diffusion effect with special multifaceted reflector
- Revolving speed: 120-140RPM



SNE-S-TI

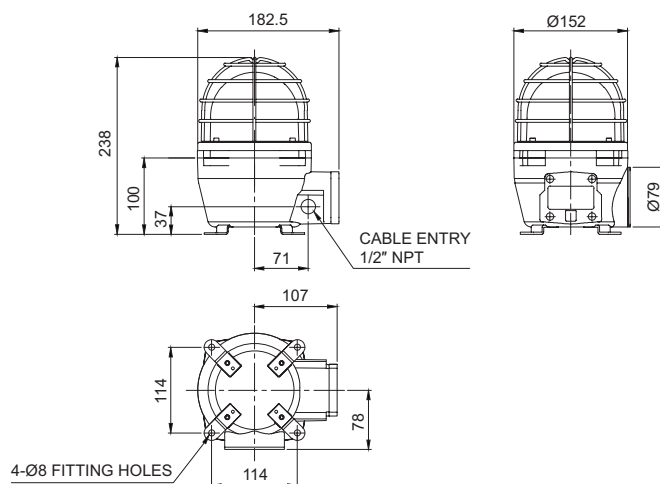


SNE-TI

Technical Diagram

Units: mm

· SNELR-TI / SNEL-TI / SNE-S-TI / SNE-TI



Ordering Specification

SNE	-	230	-	R	-	TI
[Model number]		[Voltage]		[Color]		[Telephone Initiated]
SNELR		12-DC12V		● R-Red		
SNEL		24-DC24V		● A-Amber		TI-Telephone Initiated
SNE-S		120-AC120V		● G-Green		
SNE		230-AC230V		● B-Blue		

Customization

- Explosion proof cable gland attached type available (Standard type does not come with explosion proof cable gland)
- 2 ways cable entries
- Customized cable entry (M20×1.5) available