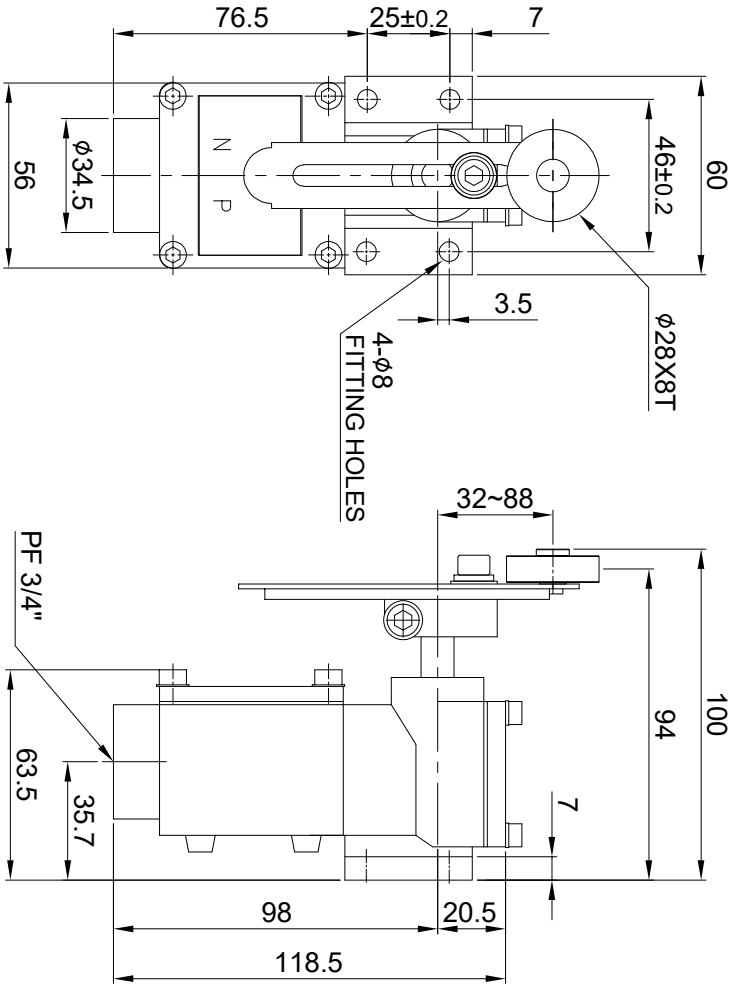


MARK	DATE	REVISION	REVISER	APP. BY
$\Delta$				
$\Delta$				
$\Delta$				

MODEL NO	SH6560S-AL			
MATERIAL	HEAD & BODY - DIE CAST BRASS			
CONATCT	BOLT NUT ROLLER LEVER - SUS 2CKT-DB, 1A1B, 250VAC 6A			
PROTECTION GRADE	WATER & DUST PROOF - IP66			
CABLE ENTRY	PF 3/4"			
COLOR	MAKER STANDARD			
INSULATION RESISTANCE	100M $\Omega$ MIN. at 500V DC			

■ Operating Characteristics

OF max.g	1,680
RF min.g	280
PT	25 $\pm$ 5°
MD max.	10°
TT min.	70°



ISO2768-1 : CLASS OF TOLERANCE

	f	m	Ⓢ	v
0.5~3	$\pm$ 0.05	$\pm$ 0.1	$\pm$ 0.2	-
3~6	$\pm$ 0.1	$\pm$ 0.2	$\pm$ 0.3	$\pm$ 0.5
6~30	$\pm$ 0.15	$\pm$ 0.3	$\pm$ 0.5	$\pm$ 1
30~120	$\pm$ 0.2	$\pm$ 0.5	$\pm$ 1	$\pm$ 1.5
120~400	$\pm$ 0.3	$\pm$ 0.8	$\pm$ 1.2	$\pm$ 2.5
400~1000	$\pm$ 0.5	$\pm$ 1.2	$\pm$ 2	$\pm$ 4
0~10	$\pm$ 1°	$\pm$ 1°30'	$\pm$ 1°30'	$\pm$ 3°
10~50	$\pm$ 0°30'	$\pm$ 1°	$\pm$ 1°	$\pm$ 2°
50~120	$\pm$ 0°20'	$\pm$ 0°30'	$\pm$ 0°30'	$\pm$ 1°
120~400	$\pm$ 0°10'	$\pm$ 0°13'	$\pm$ 0°30'	$\pm$ 0°30'

FOR LINEAR DIMENSIONS

FOR ANGULAR DIMENSIONS

Nr.	DWG. NO.	TITLE/ NAME		MAT'L	QTY	REFERENCE
DSND BY	CHGD BY	CHGD BY	<div></div>	APRV BY	VIEW	DATE
J.H.PARK	J.H.PARK			J.K.HAN	3	2020.11.20
TITLE			SH6560S-AL			
OUTLINE DRAWING			SH6560S-AL			
			MODEL			

DWG. NO.

SH6560S-AL-OUT



SCALE	SIZE	REV	SHEET
N/S	A4	00	1/1