

LED Light Bars for Distribution Panel

QELT-UL

UL (RU certified) LED lighting that emits high brightness in the distribution panel space



QELT-UL

PRODUCT SPECIFICATION

QELT-UL

Materials Lens-PC, Side cover-ABS, Bracket-STS201

Ambient operating temperature -30°C to +50°C

Certificates UL(RU)

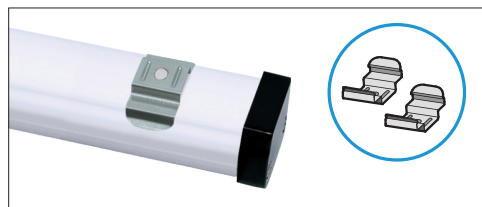
- Wide direct light distribution for high illumination in the distribution panel
- Built-in terminal allows easy wiring
- LED direct AC connect system, no need other power device
- 4 kinds of products length 200/300/400/500mm for each condition
- Removable mount bracket that adjust mount distance

Specifications

QELT-UL Terminal Box Equipped



Detachable mounting bracket



Detachable mounting bracket structure with free mounting hole spacing

QELT-UL LED Light Bars for Distribution Panel

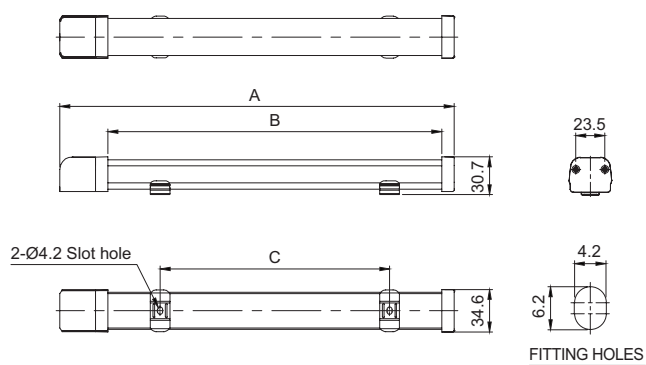
Optics Specifications				
Model number	QELT-200-UL	QELT-300-UL	QELT-400-UL	QELT-500-UL
Lens color	Translucent	Translucent	Translucent	Translucent
Light color	Cooldaylight			
Color temperature	6,000-7,000K			
Luminous flux	370lm	780lm	1,180lm	1,310lm
Illumination(at 1m)	95Lux	200Lux	300Lux	335Lux
Specifications				
Model number	QELT-200-UL	QELT-300-UL	QELT-400-UL	QELT-500-UL
Voltage	AC110V-120V			
Range for operation voltage	AC98V-132V			
Power consumption	5W	9W	13W	15W
Insulation resistance	Min. 100MΩ(500V DC mega ohm meter)			
Withstanding voltage	1,500VAC, 60Hz, 1 minute			
Operating temperature	-30°C - +50°C			
Protection rating	Non-Waterproof			
Materials	Lens-PC, Side cover-ABS, Bracket-STS201			
Certifications	UL(RU)			
Weight(Approx.)	0.10kg	0.12kg	0.15kg	0.17kg

※ UL(RU Listed): AC110-120V

Technical Diagram

Units: mm

·QELT-UL



Ordering Specification

QELT	-	300	-	110/120	-	UL
[Model number]		[Product length]		[Voltage]		[Certificates]
QELT-Terminal box equipped		200-200mm 300-300mm 400-400mm 500-500mm		110/120-AC110V-120V		UL-UL(RU)