

SRN / SEN15 / SEN25



SRN
(Max.108dB)



SEN15
(Max.105dB)



SEN25
(Max.115dB)

PRODUCT SPECIFICATION

SRN | SEN15 | SEN25

Materials ABS

Ambient operating temperature -25°C to +50°C

Protection rating IP55

Standard Color Red

- Cost effective model with high signal sound
- A variety of sound selections between warning sounds, alarm sounds, melodies and voice messages to fit your sophisticated application needs
- User defined voice signal type(WV) shall be provided upon request
- Can adjust sound volume with the switch built inside the unit

SRN General Electric Horns, Max.108dB

Model number	Voltage	Current	Sound pattern and volume	Certificates	Weight
SRN	DC12V	Max.	·WS-5 Warning sounds: Max.108dB ·WM-5 Melodies: Max.108dB ·WA-5 Alarms: Max.105dB ·WV-5 Customizable sounds: 95-102dB	CE	DC-0.72kg AC-0.98kg
	-24V	410mA			
	AC110V	85mA			
	AC220V	60mA			

※ DC type model has a free-voltage range of 10V-30V.

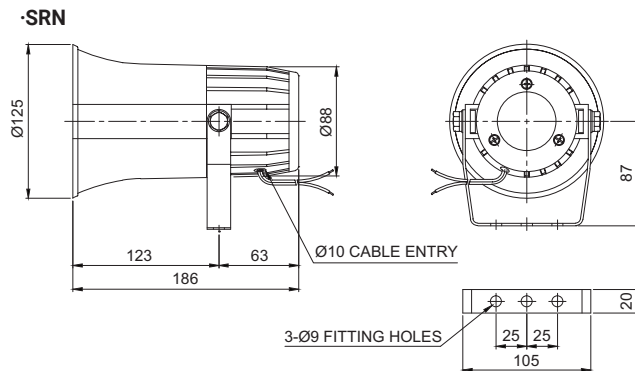
※ CE compliant: DC12V-24V

※ Max.built-in volume feature is based on WS-Ch3 / WM-Ch4 / WA-Ch4.

※ In case of customized WV 5 tone type, there may be difference of volume depending on user's audio file type.

Technical Diagram

Units: mm



SEN15 General Electric Horns, Max.105dB

Model number	Voltage	Current	Sound pattern and volume	Certificates	Weight
SEN15	DC12V-24V	Max.400mA	·WS-5 Warning sounds: Max.105dB ·WM-5 Melodies: Max.105dB ·WA-5 Alarms: Max.105dB ·WV-5 Customizable sounds: 94-101dB	CE	DC-0.76kg AC-1.03kg
	AC110V	105mA			
	AC220V	55mA			

※ DC type model has a free-voltage range of 10V-30V.

※ CE compliant: DC12V-24V, AC220V

※ Max.built-in volume feature is based on WS-Ch1 / WM-Ch4 / WA-Ch4.

※ In case of customized WV 5 tone type, there may be difference of volume depending on user's audio file type.

SEN25 General Electric Horns, Max.115dB

Model number	Voltage	Current	Sound pattern and volume	Certificates	Weight
SEN25	DC12V	2A	·WS-5 Warning sounds: Max.115dB ·WM-5 Melodies: Max.108dB ·WA-5 Alarms: Max.113dB ·WV-5 Customizable sounds: 102-115dB	CE	DC-0.95kg AC-1.23kg
	DC24V	1A			
	AC110V	245mA			
	AC220V	130mA			

※ CE compliant: DC12V, DC24V, AC220V

※ Max.built-in volume feature is based on WS-Ch1 / WM-Ch3 / WA-Ch4.

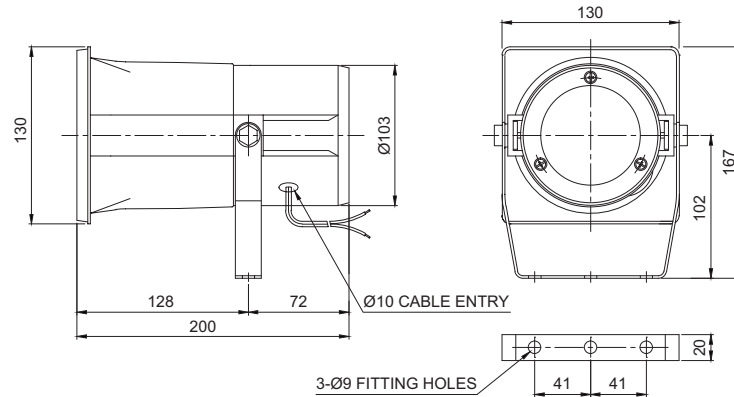
※ In case of customized WV 5 tone type, there may be difference of volume depending on user's audio file type.



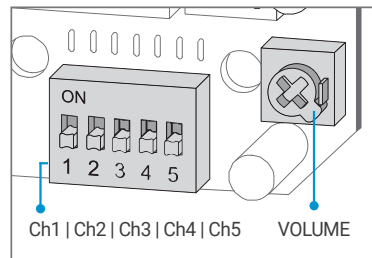
Technical Diagram

Units: mm

·SEN15 / SEN25

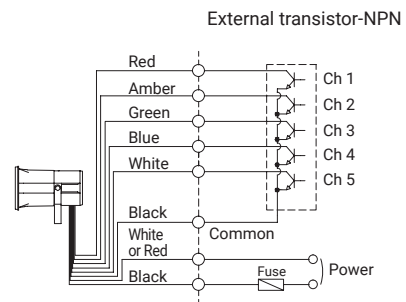
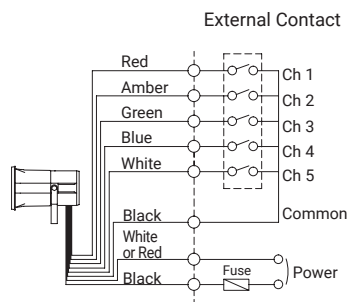


Sound Selection and Wiring Instructions



- Standard: Internal switch
- Internal switch allows to choose sound pattern for SRN / SEN15 / SEN25 models
- External Power line VCTF(0.75sq x 2C) x 400mm
- External signal line - UL1007 AWG22(0.3sq) 400mm
- This product can be wired regardless of polarity.

·SRN / SEN15 / SEN25-DC/AC



Customization

- Customization: Uses External Contact
- You can select the audible sound pattern using External Contacts or transistor with a customized external sound line (Model number: -LC)
- Optional 8 harmonies(SRN, SEN15)

Ordering Specification

SRN	-	WS	-	220	-	LC
[Model number]		[Sounds]		[Voltage]		[Sound selection]
SRN		WS-Warning		12-DC12V		(None) - Internal switch
SEN15		WM-Melody		24-DC24V		LC Type-Uses external contact
SEN25		WA-Alarm		12/24-DC12V-24V(SRN, SEN15 only)		
		WV-Customizable sound		110-AC110V		
				220-AC220V		