

SEBA Series



SEBA

PRODUCT SPECIFICATION

SEBALR I SEBAL
SEBAS I SEBA

Materials Lens-Tempered glass, Filter-PC, Housing-Al, Protection cage-STS316L, Reflector-PC, Reflector-Heat resistant ABS
Ambient operating temperature $-40^{\circ}\text{C} \leq T_{\text{amb}} \leq +60^{\circ}\text{C}$
Explosion protection rating Ex d IIC T6, IP55
Housing standard color MUNSELL No. 7.5BG 7/2
Cable entry 1/2" NPT

- Large explosion proof signal beacon and alarm bell combinations



SEBAL

SEBALR LED Revolving Signal Beacon and Alarm Bell

| Model number | Voltage | Current | Volume | Certificates | Weight | Color |
|--------------|---------|---------|----------|--------------|--------|---------|
| SEBALR | DC24V | 190mA | Max.95dB | - | 7.20kg | R-Red |
| | AC110V | 140mA | | | 7.92kg | A-Amber |
| | AC220V | 60mA | | | 7.92kg | G-Green |
| | | | | | | B-Blue |

· Revolving speed: 120-140RPM

SEBAL LED Steady/ Flashing Signal Beacon and Alarm Bell

| Model number | Voltage | Current | Volume | Certificates | Weight | Color |
|--------------|---------|---------|----------|--------------|--------|---------|
| SEBAL | DC24V | 210mA | Max.95dB | - | 7.25kg | R-Red |
| | AC110V | 160mA | | | 7.99kg | A-Amber |
| | AC220V | 70mA | | | 7.99kg | G-Green |
| | | | | | | B-Blue |

· Flashing rate: 60-80 flashes/min(Built in switch for steady/flashing selection)

SEBAS Xenon Strobe Signal Beacon and Alarm Bell

| Model number | Voltage | Current | Xenon lamp | | | Volume | Certificates | Weight | Color |
|--------------|---------|---------|---------------|-----------------------------|----------|--------------|--------------|--------|---------|
| | | | Spec | Standard | Parts no | | | | |
| SEBAS | DC24V | 660mA | 200V -550V | EUB0641 -1A(G) U type | 48 | Max. 95dB | - | 7.37kg | R-Red |
| | AC110V | 220mA | | | | | | 8.06kg | A-Amber |
| | AC220V | 160mA | | | | | | 8.06kg | G-Green |
| | | | | | | | | | B-Blue |

· Lamp connector fastening structure allows for convenient lamp replacement

· Flashing rate: 60-80 flashes/min

SEBA Bulb Revolving Signal Beacon and Alarm Bell

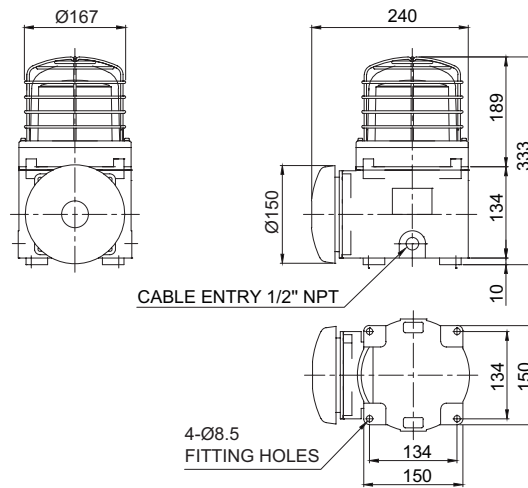
| Model number | Voltage | Current | Bulb | | | Volume | Certificates | Weight | Color |
|--------------|---------|---------|--------|----------|----------|--------------|--------------|--------|---------|
| | | | Spec | Standard | Parts no | | | | |
| SEBA | DC24V | 870mA | 24V15W | G23 15S | 18 | Max. 95dB | KIMM | 7.37kg | R-Red |
| | AC110V | 290mA | 12V15W | G23 15S | 17 | | | 8.06kg | A-Amber |
| | AC220V | 140mA | 12V15W | G23 15S | 17 | | | 8.06kg | G-Green |
| | | | | | | | | | B-Blue |

· Revolving speed: 120-140RPM

Technical Diagram

Units: mm

·SEBALR / SEBAL / SEBAS / SEBA



SEBAS



SEBALR

Customization

- Explosion proof cable gland attached type available (Standard type does not come with explosion proof cable gland)
- 2 ways cable entries
- Customized cable entry (3/4" NPT, M20×1.5, M25×1.5) available

Ordering Specification

| | | | | |
|----------------|---|------------|---|-----------|
| SEBA | - | 220 | - | R |
| [Model number] | | [Voltage] | | [Color] |
| SEBALR | | 24-DC24V | | ● R-Red |
| SEBAL | | 110-AC110V | | ● A-Amber |
| SEBAS | | 220-AC220V | | ● G-Green |
| SEBA | | | | ● B-Blue |