

## QWL20 / QWL20-DT



QWL20 / QWL20-DT

### PRODUCT SPECIFICATION

QWL20

**Materials** Housing-Al, Lens-PC, Bracket-STSS



**Ambient operating temperature** -40°C to +75°C

**Protection rating** IP67

**Certificates** CE, UL

- Water / Dust proof LED work light that resists against severe storm and heavily dusty environment
- IP67 protection rating, waterproof & dust resistant model that can be used where dusty and flooded area
- Polycarbonate lens allows excellent vibration and impact resistance.
- Long lifetime with a high intensity LED light source allows for easy maintenance
- Features excellent durability in construction environment with heavy machineries such as excavators, cranes, off-road vehicles

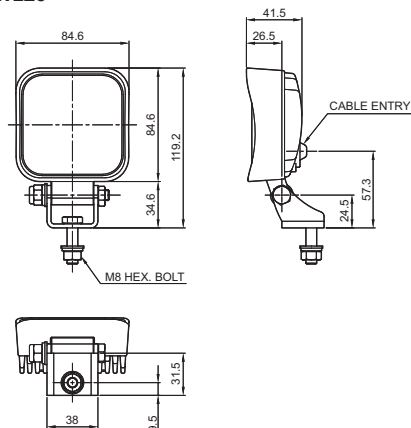
### QWL20 / QWL20-DT Water and Dust proof LED Work Lights

Optics Specifications			
Model number	QWL20		QWL20-DT
Directions		Translucent	
Light color		Cooldaylight	
Color temperature		5,500-6,500 K	
Luminous flux		650lm	
Illumination(at 1m)		4,300Lux	
Specifications			
Model number	QWL20		QWL20-DT
Voltage		DC12V-24V	
Range for operation voltage		DC10V-30V	
Power consumption		Max.11.5W	
Insulation resistance		Min. 50MΩ(500V DC mega ohm meter)	
Withstanding voltage		DC: 500VAC, 60Hz, 1 minute	
Operating temperature		-40°C to +75°C	
Protection rating		IP67	
Materials		Housing-AL, Lens-PC, Bracket-ST3S	
Certifications		 	
Weight(Approx.)		0.40Kg	

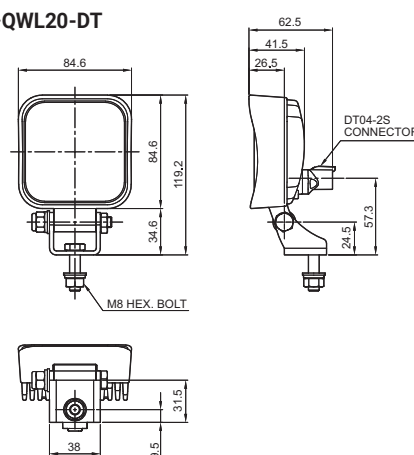
### Technical Diagram

Units: mm

·QWL20



·QWL20-DT



### Ordering Specification

QWL20-DT	-	12/24
[Model number]		[Voltage]
QWL20		12/24-DC12V-24V
QWL20-DT		

### Cautions in use

- Please read user manual carefully prior to operation to ensure safe and correct use. Failure to follow safety instructions may lead to electric shock because of fire and short circuit. Specification and dimensions listed in this catalogue subject to change without notice for product quality improvement.
- The newest product information is available on our website.