

QEB

**PRODUCT SPECIFICATION**  
QEB

**Materials** Housing, Cover-Al  
**Ambient operating temperature** -40°C ≤ Tamb ≤ +60°C  
**Protection rating** Ex d IIC T6, IP66  
**Housing standard color** MUNSELL No.7.5BG 7/2

**QEB Explosion Proof Solenoid Valve Box**

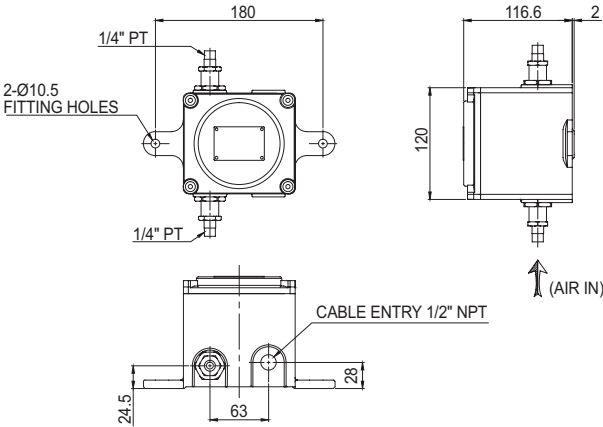
Model number	Voltage	Current	Certificates	Weight	Color
QEB	DC24V	450mA		1.19kg	
	AC110V	160mA		1.07kg	
	AC220V	75mA		1.07kg	

※ If you need a product for use in a vehicle or in a place subject to severe vibration or impact, please contact us.

**Technical Diagram**

Units: mm

·QEB



**Customization**

· explosion proof cable gland configuration

**Ordering Specification**

QEB	-	24
[Model number]		[Voltage]
QEB		24-DC24V
		110-AC110V
		220-AC220V