

## SANA Series



**SANA200**

### PRODUCT SPECIFICATION

SANA200 | SANA400 | SANA700

**Materials** Horn-PC, Solenoid valve box-ABS  
**Ambient operating temperature** -20°C to +60°C  
**Protection rating** IP56  
**Air pressure** 5-7kg/cm<sup>2</sup>  
**Housing standard color**  
 R-Red, BK-Black, Cian-MUNSELL No.7.5BG 7/2  
**Volume** Max.130dB at 1m

- High volume horn uses compressed air to power the high pitched sound made with the diaphragm
- Uses a special material which consumes a small quantity of compressed air and has long durability
- Suitable for applications like a large and noisy engine rooms, a phone alarm in a pump room, or as an emergency alarm

- **SANA200: 200-300Hz**
- **SANA400: 400-600Hz**
- **SANA700: 700-800Hz**

### SANA Series Air Horns for Vessels and Heavy Industrial Applications, Max.130dB

Model number	Frequency	Volume	Voltage	Current	Certificates	Weight	Color
SANA200	200-300Hz	Max.130dB	DC24V	450mA	-	1.19kg	● R-Red
SANA400	400-600Hz		AC110V	200mA		1.13kg	● BK-Black
SANA700	700-800Hz		AC220V	100mA		1.07kg	● 7.5BG-Cian

※ If you need a product for use in a vehicle or in a place subject to severe vibration or impact, please contact us.

### Customization

- Horn and solenoid valve box available separately for individual installation
- Non return valve, Y filter installation and regulator



Non return valve



Y filter



Regulator

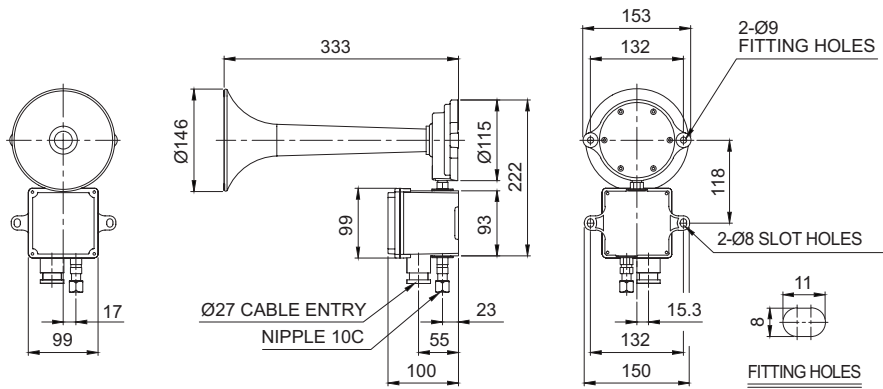
### Ordering Specification

<b>SANA200</b>	-	<b>220</b>	-	<b>R</b>
[Model number]		[Voltage]		[Color]
SANA200		24-DC24V		● R-Red
SANA400		110-AC110V		● BK-Black
SANA700		220-AC220V		● 7.5BG-Cian

## Technical Diagram

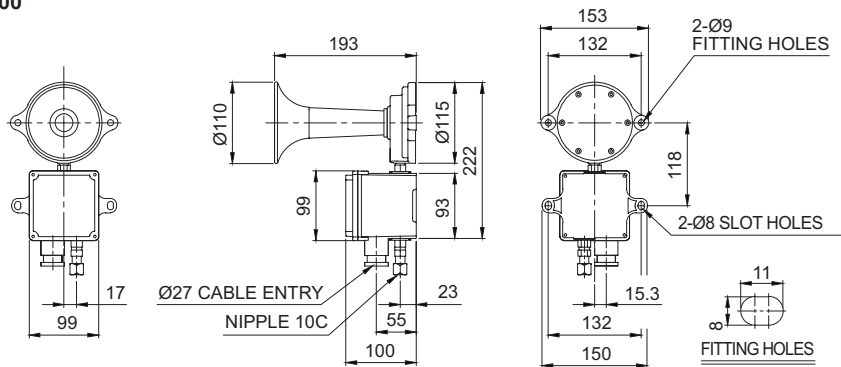
Units: mm

### ·SANA200



**SANA400**

### ·SANA400



**SANA700**

### ·SANA700

