

SR Series



SR



SRP

PRODUCT SPECIFICATION

SR | SRP
SRL | SRLP

Materials Lens-AS, Body-ABS,
Reflector-Heat resistant ABS

Protection rating IP44

Standard color 1st layered - ● Red
2nd layered - ● Red ● Green
3rd layered - ● Red ● Yellow ● Green

- Ø80mm stacked structure
- Multi signal transmissions capable in 1 signal light

SR / SRP Stackable Warning/Signal Lights

Model number	Layer	Voltage	Bulb			Certificates	Weight	Color
			Spec	Standard	Parts no			
SR SRP	1	DC12V	12V5W	T16x35 15S	5		0.28kg	● R-Red
		DC24V	24V5W	T16x35 15S	6		0.28kg	
		AC110V	12V5W	T16x35 15S	5		0.49kg	
		AC220V	12V5W	T16x35 15S	5		0.49kg	
	2	DC12V	12V5W	T16x35 15S	5		0.53kg	● R-Red ● G-Green
		DC24V	24V5W	T16x35 15S	6		0.53kg	
		AC110V	12V5W	T16x35 15S	5		0.76kg	
		AC220V	12V5W	T16x35 15S	5		0.76kg	
	3	DC12V	12V5W	T16x35 15S	5		0.71kg	● R-Red ● A-Amber ● G-Green
		DC24V	24V5W	T16x35 15S	6		0.71kg	
		AC110V	12V5W	T16x35 15S	5		1.04kg	
		AC220V	12V5W	T16x35 15S	5		1.04kg	

- Adopts a special Power transmission system that reduces noise and wear
- 2nd & 3rd stacked lens colors can be changeable except for the top layer lens
- Revolving speed: 120-140RPM
- Ambient operation temperature: -20°C to +50°C

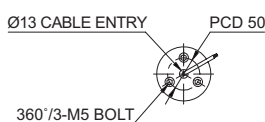
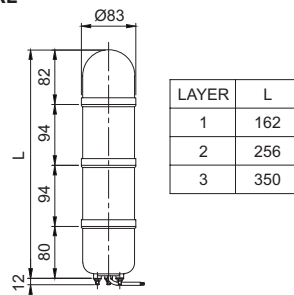
Light source current(based on 1 layer)

Voltage	DC12V	DC24V	AC110V	AC220V
Light source current(1 layer)	485mA	350mA	100mA	50mA

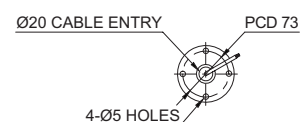
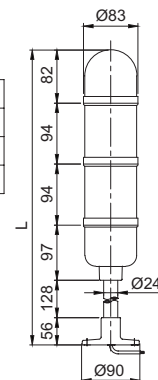
Technical Diagram

Units: mm

·SR / SRL



·SRP / SRLP



Cautions in use

- SRL/SRLP model wiring can be done with either External Contacts or External transistors.
- In case of wiring with transistors, please select the proper transistor type: either NPN or PNP based on the source voltage setting.
- The SR/SRP type warning lights use light bulbs which do not allow the use of transistors to register the connection. Please use External Contacts.



SRL / SRLP Stackable Warning/Signal Lights

Model number	Layer	Voltage	Certificates	Weight	Color
SRL SRLP	1	DC12V-24V	-	0.23kg	● R-Red
		AC110V		0.45kg	
		AC220V		0.45kg	
	2	DC12V-24V		0.37kg	● R-Red
		AC110V		0.70kg	● G-Green
		AC220V		0.70kg	
	3	DC12V-24V		0.53kg	● R-Red
		AC110V		0.89kg	● A-Amber
		AC220V		0.89kg	● G-Green

- Qlight's exclusive LED light distribution system with multi-tiered reflector spreads light evenly throughout the surface of the 94mm height special diffusing lens
- Fixed user selected color arrangement
- Flashing rate: 60-80 flashes/min(Built-in switch for selection between steady/flashing mode)
- Ambient operating temperature: -30°C to +50°C
- Compliant with RoHS directive



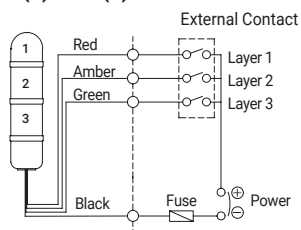
SRL

Light source current(based on 1 layer)

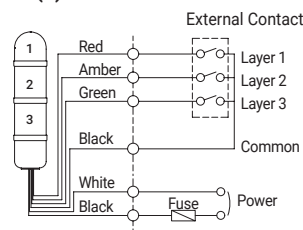
Voltage	DC12V-24V	AC110V	AC220V
Light source current(1 layer)	Max.125mA	65mA	35mA

Technical Diagram

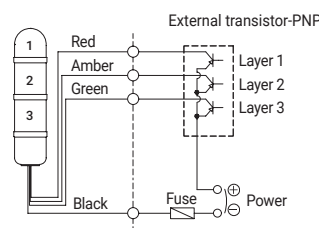
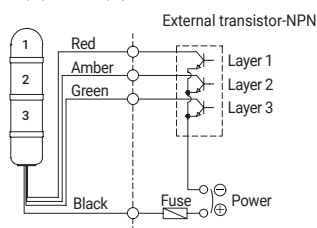
·SR(P) / SRL(P)-DC



·SR(P) / SRL(P)-AC



·SR(P) / SRL(P)-DC



- External Power line - UL1015 AWG18(0.75sq) x 2C 400mm
- External signal line - UL1007 AWG22(0.3sq) 400mm
- SR, SRP: Black output line is negative(-)



SRLP

Ordering Specification

SRL	-	3	-	220	-	RAG
[Model number]		[Layer]		[Voltage]		[Color]
SR		1-1Layer		12-DC12V		● R-Red
SRP		2-2Layers		24-DC24V		● A-Amber
SRL		3-3Layers		12/24-DC12V-24V		● G-Green
SRLP				(SRL, SRLP Only)		
				110-AC110V		
				220-AC220V		

Customization

- 4 layers available upon request
- Customized color arrangement available