



SKTL



SKTLB

## PRODUCT SPECIFICATION

SKTL | SKTLB  
SKTLM | SKTLBM

**Materials** Lens-PC, Housing-PC

**Ambient operating temperature** -30°C to +50°C

**Protection rating** IP66

**Flashing rate** 60-80/min

- High brightness LED with special light filter structure provides clear signal light transmission even in outdoor environments with intense sunlight
- Excellent vibration and impact resistance with use of polycarbonate lens
- Lens with special coating material maintains transparency even when exposed to harsh environments where scratches, dust and direct sunlight is possible
- Water resistant, dustproof, and weather resistant structure provides excellent durability under harsh environments such as rainstorms, frost, and intense heat
- Different lights from side to side improve efficiency of emergency signal transmission effect (SKTLM/ SKTLBM)
- 4 strong magnets enable secure attachment to the desired place(SKTLM/ SKTLBM)
- Convenient emergency signal sound control with built-in ON/OFF switch(SKTLBM)
- Can select between standard and built-in buzzer type depending on installation environment

### SKTL Cube-Shaped LED Warning Light, Direct Mount

Model number	Voltage	Current	Certificates	Weight	Color
SKTL	DC12V -24V	Max. 880mA	CE	0.35kg	<ul style="list-style-type: none"> <li>● R-Red</li> <li>● A-Amber</li> <li>● G-Green</li> <li>● B-Blue</li> <li>○ W-White</li> </ul>

· Light effect: Strobe

※ CE compliant: DC12V-24V

### Customization

- Strobe left and right,  
Flashing left and right(SKTL/SKTLB)

### Wiring Instructions

- External Power line(SKTL)  
UL1015 AWG18(0.75sq) x 2C 400mm
- External Power line(SKTLB)  
UL2464 AWG18(0.75sq) x 3C 400mm
- This product is black output line is negative(-).

### SKTLB Cube-Shaped LED Warning Light with Built-in Siren Buzzer, Direct Mount

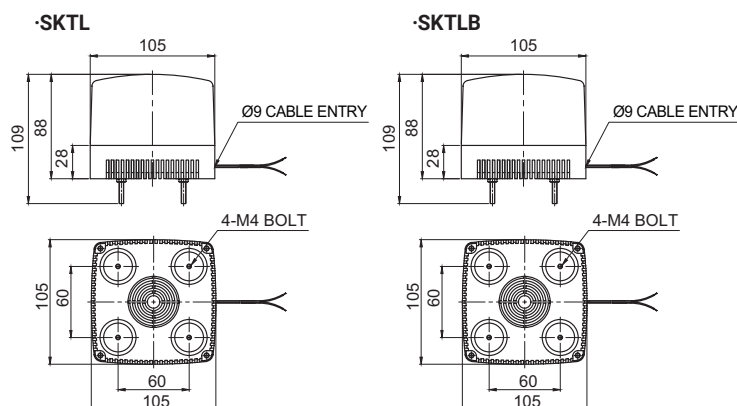
Model number	Voltage	Current	Certificates	Weight	Volume	Color
SKTLB	DC12V	1.13A	CE	0.45kg	Max.105dB	<ul style="list-style-type: none"> <li>● R-Red</li> <li>● A-Amber</li> <li>● G-Green</li> <li>● B-Blue</li> <li>○ W-White</li> </ul>
	DC24V	560mA		0.45kg		

· Light effect: Strobe

※ CE compliant: DC24V

### Technical Diagram

Units: mm



### Ordering Specification

SKTL	-	24	-	R
[Model number]		[Voltage]		[Color]
SKTL SKTLB		12/24-DC12V-24V(SKTL) 12-DC12V 24-DC24V		<ul style="list-style-type: none"> <li>● R-Red</li> <li>● A-Amber</li> <li>● G-Green</li> <li>● B-Blue</li> <li>○ W-White</li> </ul>

# Cubic LED Warning Lights for Vehicles

## SKTL Series



SKTLM-Normal cigarette lighter plug,  
SKTLBM-Operation controlled by ON/OFF switch attached to the cigarette plug

### SKTLM Cube-Shaped LED Warning Light for Vehicles with Magnet

Model number	Voltage	Current	Certificates	Weight	Color
SKTLM	DC12V -24V	Max. 275mA	CE	0.45kg	R/B-Red/Blue

- 4 strong magnets enable secure attachment to curved vehicle surfaces
- Light effect : Flashing left and right
- ※ CE compliant: DC12V-24V



SKTLM

### SKTLBM Cube-Shaped LED Warning Light with Built-in Siren Buzzer with magnet, Direct Mount

Model number	Voltage	Current	Certificates	Weight	Volume	Color
SKTLBM	DC12V	480mA	CE	0.55kg	Max.105dB	R/B-Red/Blue
	DC24V	290mA		0.55kg		

- Sound volume: Max.105dB at 1m
- Easy control of warning sound with built-in ON/OFF switch
- Light effect : Flashing left and right
- ※ CE compliant: DC24V

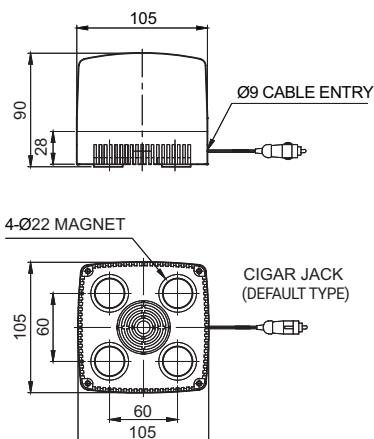


SKTLBM

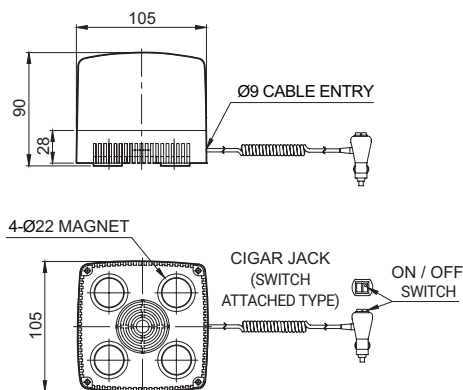
## Technical Diagram

Units: mm

### ·SKTLM



### ·SKTLBM



The special rubber magnet adheres securely to the vehicle without damaging the surface of the vehicle!

## Wiring Instructions

- Cigarette lighter plug, IEC42(0.75sq) x 2P 2m

## Ordering Specification

SKTLM	-	24	-	R
[Model number]		[Voltage]		[Color]
SKTLM SKTLBM		12/24-DC12V-24V(SKTLBM) 12-DC12V 24-DC24V		R/B-Red/Blue

## Customization

- Color combination except for standard
- Strobe, Strobe left and right (SKTLM/SKTLBM)