



EBL

## PRODUCT SPECIFICATION

EBL

### Materials

Housing-Al, Lens-Tempered glass, Bracket-Al

**Ambient operating temperature** -25°C to +55°C**Protection rating** IP67

- Waterproof, dustproof, oil-resistant LED work light of performance line
- Excellent oil resistance in machine tools where high-temperature cutting oil is used
- Low power consumption and long life by using high-efficiency LED
- Among body lengths of 300/500/600mm, select a suitable specification according to the lighting range and installation space
- 1.5m cable withdrawal type is standard, M12 connector type is available upon request

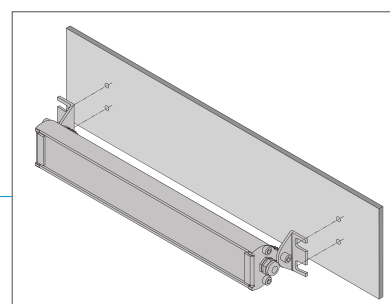
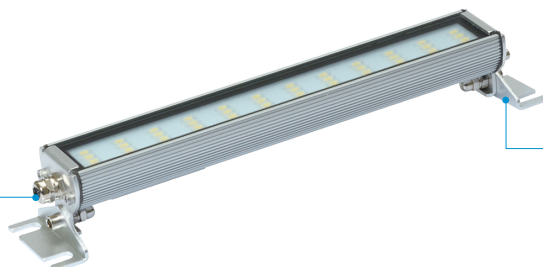
### EBL LED Work Lights

Optics Specifications				
Model number		EBL300	EBL500	EBL600
Lens color			Transparent	
Light color			Cooldaylight	
Color temperature			6,000-6,500K	
Luminous flux	DC	-	1,500lm	1,800lm
	AC	1,000lm	-	-
Illumination (at 1m)	DC	-	700Lux	700Lux
	AC	300Lux	-	-
Specifications				
Model number		EBL300	EBL500	EBL600
Voltage		AC220V	DC24V	DC24V
Range for operation voltage		AC200-240V	DC24V	DC24V
Power consumption	DC24V	-	15W	18W
	AC220V	10W	-	-
Insulation resistance		Min. 100MΩ(500V DC mega ohm meter)		
Withstanding voltage		DC: 500VAC, 60Hz, 1 minute/AC: 1,500VAC, 60Hz, 1 minute		
Operating temperature		-25°C to +55°C		
Protection rating		IP67		
Materials		Housing-Al, Lens-Tempered glass, Bracket-Al		
Certification		CE		
Weight(Approx.)		0.50kg	0.70kg	0.80kg

※ CE compliant : DC24V

### Structural Features

M12 connector



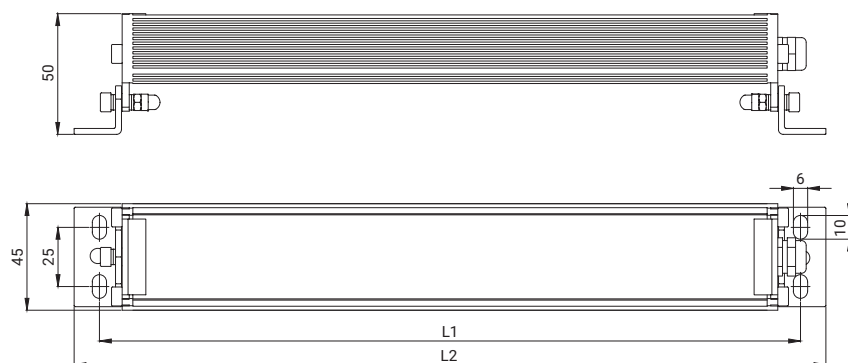
Mount bracket



## Technical Diagram

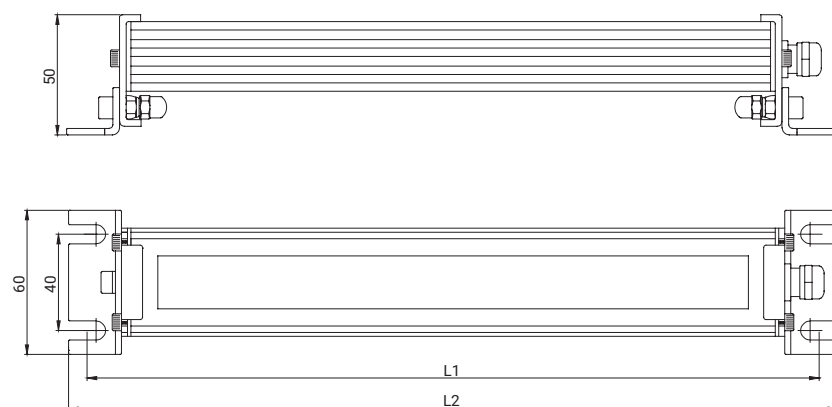
Units: mm

### • EBL(B Bracket)



Model number	L1	L2
EBL300	294	314
EBL500	508	528
EBL600	592	612

### • EBL(C Bracket)



Model number	L1	L2
EBL300	304	320
EBL500	515	531
EBL600	602	618

## Ordering Specification

EBL	-	300	-	24	-	C
[Model number]		[Product length]		[Voltage]		[Bracket]
EBL		300-10W 500-15W 600-18W		24-DC24V 220-AC220V		B-B Bracket C-C Bracket