

# EMCL50A / EMCL50B



## PRODUCT SPECIFICATION

EMCL50A | EMCL50B

**Materials** Housing-AL, Lens-PC  
**Ambient operating temperature** -25°C to +55°C  
**Volume** Max. 85dB at 1m  
**Protection rating**  
 Standard type-IP69, Built-in buzzer type-IP20

- Small indicator light capable of transmitting three signal colors with one indicator light
- By applying a milky translucent lens, the unique color of the LED is emitted subtly when turned on
- Buzzer specifications can be selected for signal wire withdrawal type or M12 connector mounting type




EMCL50A



EMCL50B

## EMCL50A / EMCL50B Industrial LED beacon

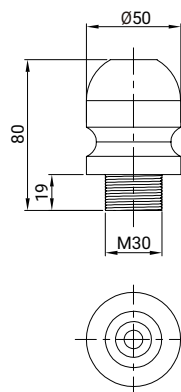
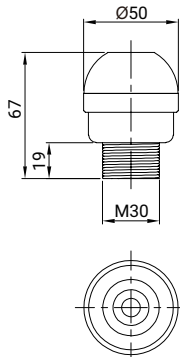
Model number	Voltage	Current	Certificates	Weight	Color	
EMCL50A Steady	DC24V	41mA		0.14kg	<div><div><div></div></div><div><div></div></div><div><div></div></div></div> <div><div>R-Red</div><div>A-Amber</div><div>G-Green</div></div>	
EMCL50A-BZ Steady w/built-in buzzer						
EMCL50B Steady				0.21kg		
EMCL50B-BZ Steady w/built-in buzzer						

### • EMCL50A / EMCL50A-BZ

### • EMCL50B / EMCL50B-BZ

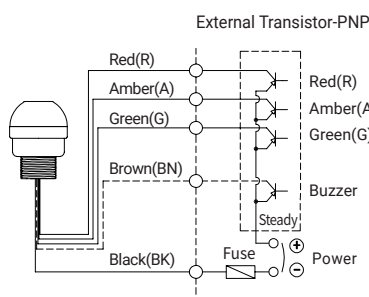
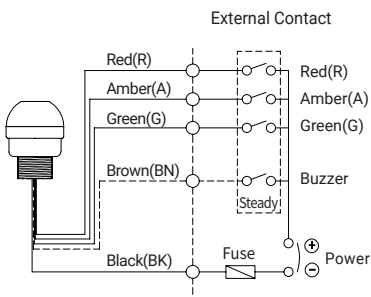
## Technical Diagram

Units: mm



## Wiring Instructions

- EMCL50A / EMCL50A-BZ
- EMCL50B / EMCL50B-BZ



## Ordering Specification

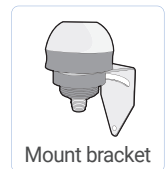
EMCL50A	-	24	-	RAG	-	M12
[Model number]		[Voltage]		[Color]		[Cable]
EMCL50A EMCL50A-BZ EMCL50B EMCL50B-BZ		24-DC24V		<div style="display: flex; flex-direction: column; align-items: center;"> <div style="width: 10px; height: 10px; background-color: red; margin-bottom: 5px;"></div> <div style="width: 10px; height: 10px; background-color: yellow; margin-bottom: 5px;"></div> <div style="width: 10px; height: 10px; background-color: green;"></div> </div>		None-External contact M12-M12 connector type

## Bracket

- It can be installed on the wall by adopting wall mounting type bracket.



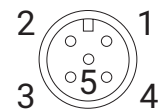
Φ32 type



Mount bracket

## M12 connector type

### 5PIN CONNECTOR



No.	Color	Wiring
1	RED	Pin 1
2	AMBER	Pin 2
3	GREEN	Pin 3
4	Common	Pin 4
5	Buzzer	Pin 5

## Customization

- M12 Five- Core Cable/1.5m
- NPN type