

# S80 Series



## PRODUCT SPECIFICATION

S80AL

**Materials** Lens-AS, Housing-ABS,  
Reflector-Heat resistant ABS  
**Ambient operating temperature** -30°C to +50°C  
**Volume** Max.90dB at 1m  
**Protection rating** IP44  
**Flashing rate** 60-80/ min  
**Compliant with RoHS directive**

- Equipped wall mount allows for easy assembly. Additional mounting brackets not required
- Maintenance reduced with long lasting LED light source
- Terminal block designed inside the side mount bracket enables easy wiring
- Switch for selection between steady and flashing mode
- Can select between standard and built-in buzzer type depending on installation environment



S80AL

## S80AL LED Steady/Flashing Signal Light

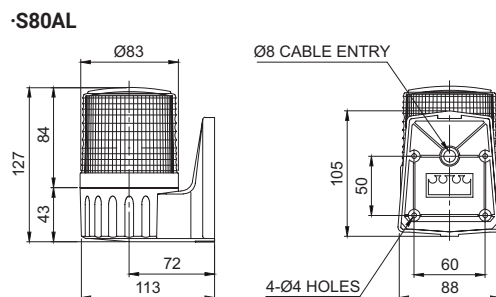
Model number	Voltage	Current	Certificates	Weight	Color
S80AL	DC12V-24V	Max.145mA	CE	0.26kg	R-Red
	AC110V	35mA		0.35kg	A-Amber
	AC220V	20mA		0.35kg	G-Green
					B-Blue

※ DC type model has a free-voltage range of 10V-30V

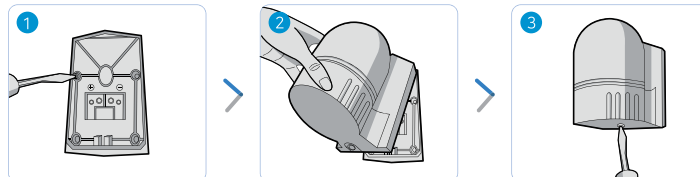
※ CE compliant: DC12V-24V

## Technical Diagram

Units: mm



## Mounting Instructions



- 1 Secure the base plate to the mounting surface, and the Power line to the terminal block
- 2 Mount the warning light by inserting the ring(hook) into the upper part of the base plate
- 3 Screw in the bolt at the base of the mounting bracket to complete assembly

## Ordering Specification

S80AL	-	BZ	-	110	-	R
[Model number]		[Buzzer option]		[Voltage]		[Color]
S80AL		(None)		12/24-DC12V-24V		R-Red
		- No buzzer		110-AC110V		A-Amber
		BZ		220-AC220V		G-Green
		- Built-in buzzer				B-Blue



## S80A Series enable easy wiring

S80A Series enables easy wiring with its terminal block attached to the fixed base plate. With this system the contacts in the housing sends Power directly to the terminal block.