

SE Series

The brass housing product with excellent corrosion resistance



SEL

PRODUCT SPECIFICATION

SEL | SE-S | SE

Materials Lens-Tempered glass, Filter-PC, Housing-Brass, Protection cage-STSS16L, Reflector-PC, Reflector-Heat resistant ABS

Ambient operating temperature

-40°C ≤ Tamb ≤ +60°C

Explosion protection rating Ex d IIC T6, IP66

Certificates KIMM

Cable entry 1/2" NPT

- Brass housing explosion proof signal beacon with excellent corrosion resistant
- A variety of light source selections from bulb, LED, and xenon lamp
- Fully enclosed structure with protection rating of IP66
- Integrated housing and terminal box model

SEL LED Steady/Flashing Signal Beacon

Model number	Voltage	Current	Certificates	Weight	Color
SEL	DC12V-24V	Max.190mA	KIMM	13.29kg	● R-Red
	AC110V	50mA		14.26kg	● A-Amber
	AC220V	25mA		14.26kg	● G-Green
					● B-Blue

- Long-lasting high intensity LED light source
- Suitable for applications where bulb replacement is hard
- Built-in steady/flashing selection switch
- Flashing rate: 60-80 flashes/min

SE-S Xenon Lamp Strobe Signal Beacon

Model number	Voltage	Current	Xenon lamp			Certificates	Weight	Color
			Spec	Standard	Parts no			
SE-S	DC12V-24V	Max.430mA		BGA2120	47	KIMM	13.53kg	● R-Red
	AC110V	75mA	200V -350V	-BBC			13.51kg	● A-Amber
	AC220V	75mA		I type			13.51kg	● G-Green
								● B-Blue

- Lamp connector fastening structure allows for convenient lamp replacement
- Excellent long-distance visibility with strong strobe signal diffusion
- Flashing rate: 60-80 flashes/min

SE Bulb Revolving Warning Beacon

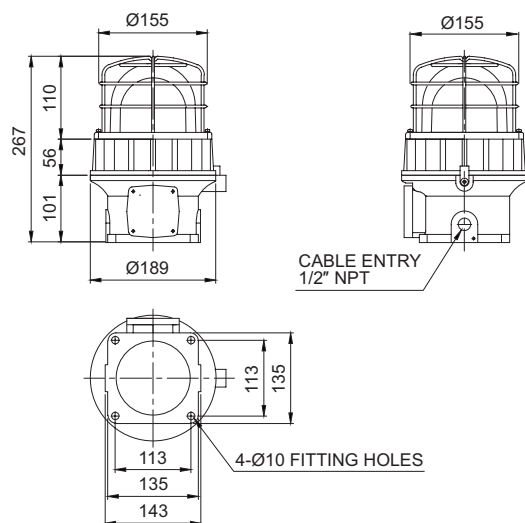
Model number	Voltage	Current	Bulb			Certificates	Weight	Color
			Spec	Standard	Parts no			
SE	DC12V	1A	12V10W	T16x35 15S	9	KIMM	13.35kg	● R-Red
	DC24V	1.25A	24V10W	T16x35 15S	10		13.35kg	● A-Amber
	AC110V	130mA	12V10W	T16x35 15S	9		13.91kg	● G-Green
	AC220V	65mA	12V10W	T16x35 15S	9		13.91kg	● B-Blue

- Excellent signal light diffusion effect with multi-faced reflector
- Revolving speed: 120-140RPM

Technical Diagram

Units: mm

·SEL / SE-S / SE



SE-S

Customization

- Explosion proof cable gland attached type available (Standard type does not provide explosion proof cable gland)
- 2 ways cable entries
- Cable entry 3/4" NPT, M20 x 1.5



SE

Ordering Specification

SE	-	220	-	R
[Model number]		[Voltage]		[Color]
SEL		12-DC12V		● R-Red
SE-S		24-DC24V		● A-Amber
SE		12/24-DC12V-24V(SEL, SE-S only)		● G-Green
		110-AC110V		● B-Blue
		220-AC220V		