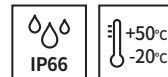


Heavy-Duty LED Revolving Beacons for Vessels and Heavy Industry Applications

SH1LR / SH2LR



SH1LR - Ø125mm, SH2LR - Ø150mm

PRODUCT SPECIFICATION

SH1LR | SH2LR

Materials Lens-PC, Housing-Al, STS316L(SH1LR-SUS)
Protection cage-STS316L, Reflector-PC, Bracket-STS316L
Ambient operating temperature -20°C to +50°C
Protection rating IP66
Housing standard color MUNSELL No. 7.5BG 7/2
Cable entry 1/2" PF
Revolving speed 120-140RPM

- Features high visibility in all directions with special concentrated LED light structure and multi side reflector
- STS housing provides superior durability and corrosion resistance (SH1LR-SUS, SH1LRP-SUS)

SH1LR LED Revolving Beacons

Model number	Voltage	Current	Certificates	Color
SH1LR Standard type	DC12V	420mA	CCS	R-Red
SH1LR-SUS Standard type	DC24V	260mA		A-Amber
SH1LRP Protection cage type	AC110V	80mA		G-Green
SH1LRP-SUS Protection cage type	AC220V	50mA		B-Blue
SH1TLR Terminal box type				
SH1TLRP Protection cage and terminal box type				

※ CCS compliant: SH1LR / SH1LRP only

SH2LR LED Revolving Beacons

Model number	Voltage	Current	Certificates	Color
SH2LR Standard type	DC12V	420mA		R-Red
SH2LRP Protection cage type	DC24V	260mA		A-Amber
SH2TLR Terminal box type	AC110V	80mA		G-Green
SH2TLRP Protection cage and terminal box type	AC220V	50mA		B-Blue



SH1LRP



SH2TLR

SH1LR | SH2LR LED Revolving Beacons Specification Category and Products Weight Chart

Type	SH1 Series	SH2 Series
Lens diameter	Φ125mm	Φ150mm
Standard	SH1LR (1.64kg)	SH2LR (1.69kg)
	SH1LR-SUS (2.08kg)	
Built-in protection cage	SH1LRP (1.89kg)	SH2LRP (1.98kg)
	SH1LRP-SUS (2.33kg)	
Built-in terminal box	SH1TLR (2.10kg)	SH2TLR (2.15kg)
Built-in protection cage & Terminal box	SH1TLRP (2.35kg)	SH2TLRP (2.44kg)

※ Product weight is based on AC type.

Ordering Specification

SH1LR	-	12	-	R	-	SUS
[Model number]		[Voltage]		[Color]		[Housing materials]
SH1LR / SH1LRP		12-DC12V		R-Red		None - Al
		24-DC24V		A-Amber		SUS - STS316L
SH1TLR / SH1TLRP		110-AC110V		G-Green		
SH2LR / SH2LRP		220-AC220V		B-Blue		
SH2TLR / SH2TLRP						

SH1LR / SH2LR models are equipped with flexible connector, and SH1TLR / SH2TLR models are equipped with 15C nipple at cable entry.



Flexible connector



15C nipple

SH1L / SH2L



SH1LP



SH2TL






PRODUCT SPECIFICATION

SH1L | SH2L

Materials Lens-PC, Housing-Al, STS316L(SH1L-SUS)
Protection cage-ST316L, Reflector-Heat resistant ABS
Bracket-ST316L
Ambient operating temperature -30°C to +50°C
Protection rating IP66
Housing standard color MUNSELL No. 7.5BG 7/2
Cable entry 1/2" PF
Flashing rate 60-80 flashes/min

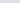



- Uniform and clear light diffusion with multi layered LED light distribution reflector
- Built-in switch for selection between steady and flashing mode
- STS housing provides superior durability and corrosion resistance(SH1L-SUS, SH1LP-SUS)

SH1L LED Steady/Flashing Signal Beacons

Model number		Voltage	Current	Certificates	Color
SH1L	Standard type	DC12V-24V	Max.300mA		 R-Red
SH1L-SUS	Standard type				 A-Amber
SH1LP	Protection cage type	AC110V	70mA		 G-Green
SH1LP-SUS	Protection cage type				 B-Blue
SH1TL	Terminal box type	AC220V	35mA		
SH1TLP	Protection cage and terminal box type				

※ CCS compliant: SH1L / SH1LP only

SH2L LED Steady/Flashing Signal Beacons

Model number		Voltage	Current	Certificates	Color
SH2L	Standard type	DC12V-24V	Max.300mA	-	 R-Red
SH2LP	Protection cage type	AC110V	70mA		 A-Amber
SH2TL	Terminal box type				 G-Green
SH2TLP	Protection cage and terminal box type	AC220V	35mA		 B-Blue

SH1L | SH2L LED Steady/Flashing Signal Beacons Specification Category and Products Weight Chart

Type	SH1 Series	SH2 Series
Lens diameter	Φ125mm	Φ150mm
Standard	SH1L (1.49kg)	SH2L (1.57kg)
	SH1L-SUS (1.93kg)	
Built-in protection cage	SH1LP (1.74kg)	SH2LP (1.86kg)
	SH1LP-SUS (2.18kg)	
Built-in terminal box	SH1TL (1.95kg)	SH2TL (2.03kg)
Built-in protection cage & Terminal box	SH1TLP (2.20kg)	SH2TLP (2.32kg)

※ Product weight is based on AC type.

SH1L /SH2L models are equipped with flexible connector, and SH1TL /SH2TL models are equipped with 15C nipple at cable entry.



Flexible connector



15C nipple

Ordering Specification

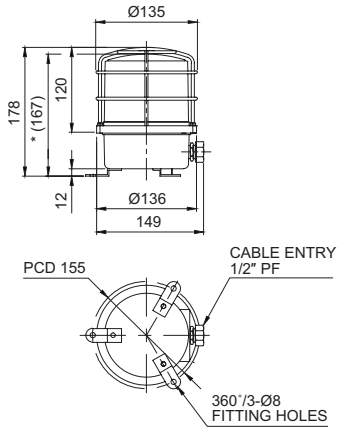
SH2L	-	220	-	R	-	SUS
[Model number]		[Voltage]		[Color]		[Housing materials]
SH1L / SH1LP		12/24-DC12V-24V 110-AC110V 220-AC220V		● R-Red ● A-Amber ● G-Green ● B-Blue		None - Al SUS - STS316L
SH1TL / SH1TLP SH2L / SH2LP SH2TL / SH2TLP						

SH1 / SH2 Series

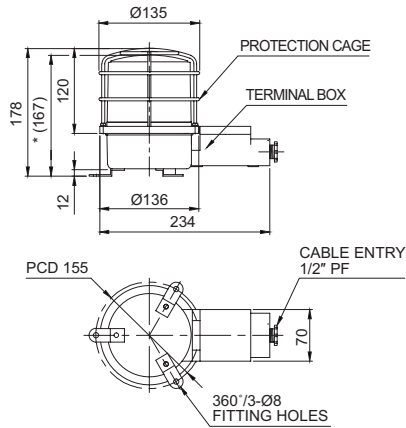
Technical Diagram

Units: mm

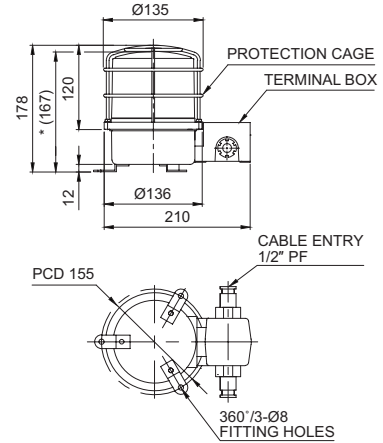
·SH1LRP(-SUS) / SH1LP(-SUS) / SH1SP(-SUS) / SH1P(-SUS)



·SH1TLRP / SH1TLP / SH1TSP / SH1TP

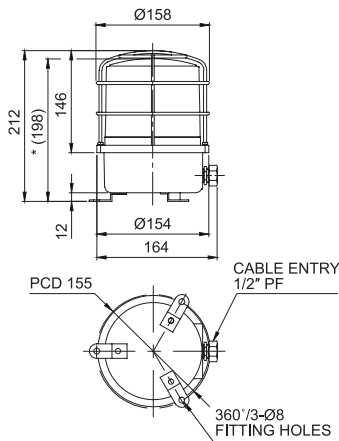


·SH1LR-2TP / SH1L-2TP / SH1S-2TP / SH1-2TP (Cable entry 2EA type)

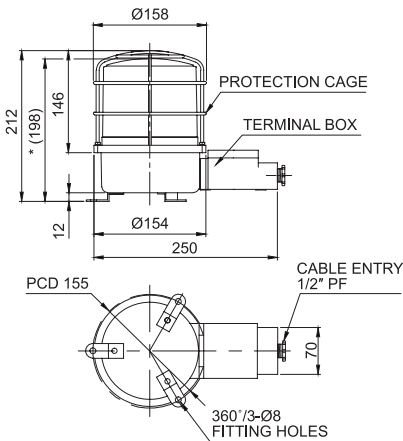


※ *(167) represents SH1LR(-SUS)/ SH1L(-SUS)/SH1S(-SUS)/ SH1(-SUS), SH1TLR/ SH1TL/ SH1TS/ SH1T size without protection cage.

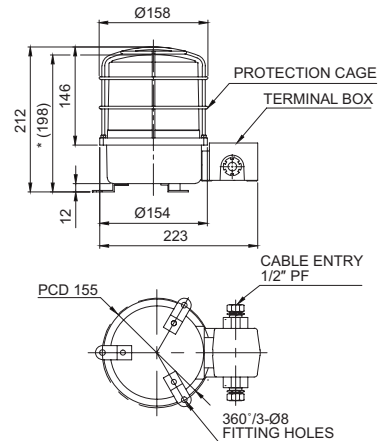
·SH2LRP / SH2LP / SH2SP / SH2P



·SH2TLRP / SH2TLP / SH2TSP / SH2TP



·SH2LR-2TP / SH2L-2TP / SH2S-2TP / SH2-2TP (Cable entry 2EA type)



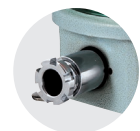
※ *(198) represents SH2 Series size without protection cage.

Wiring Instructions

· SH1(-SUS), SH1LR(-SUS), SH2, SH2LR : Black output line is negative(-).

Customization

- 3/4" PF Cable entry
Standard cable entry is 1/2" PF, 3/4" PF is customization
- Built-in cable gland type
Flexible connector is equipped to the standard cable entry
- Brass housing product
Color will be MUNSELL No. 7.5BG 7/2 when released.
- 2T type has 2 cable entries in the terminal box
2 cable entries terminal box is a customized add-on.



Built-in cable gland



Brass housing product



2 cable entries terminal box model