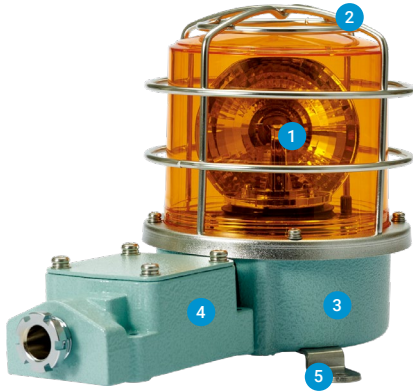


## SH1 / SH2 Series

Superior durability with fully enclosed structure and corrosion resistance, suitable for vessels and heavy industry applications



### PRODUCT SPECIFICATION

SH1 Series | SH2 Series

**Materials** Lens-PC, Housing-Al, STS316L(SH1-SUS)

Protection cage-STSS316L, Reflector-PC, Reflector for bulb type-Heat resistant ABS, Bracket-STSS316L

**Protection rating** IP66

**Housing standard color** MUNSELL No. 7.5BG 7/2

**Cable entry** 1/2" PF

- Aluminum housing and polycarbonate lens material provides excellent impact resistance under seismic conditions
- STS housing provides superior durability and corrosion resistance(SH1-SUS)
- Excellent hermetic structure that blocks water and dust
- Can select a variety of light sources (Bulb, LED, and xenon) for your application needs and environmental conditions
- Terminals located inside the terminal box or product

#### 1 Lenses

- Utilizes a strong and durable polycarbonate material with excellent shock and vibration resistance
- The lens surface has two types depending on the light source function-Light diffusion type and light transmission type



Light transmission type

LED revolving type  
Bulb revolving type  
SH( )LR | SH( )



Light diffusion type

LED steady/flashing type  
xenon lamp strobe type  
SH( )L | SH( )S

#### 2 Protection cage

- The durable protection cage is made of corrosion resistant stainless steel that prevents damage to the lens from external contact
- Materials: STS316L

#### 3 Housing

- The special aluminum body housing features superior durability
- STS housing provides superior durability and corrosion resistance(SH1-SUS)
- The housing is corrosion resistant from a special anodized surface treatment process
- Materials: Al, STS316L(SH1-SUS)

#### 4 Terminal box

- Terminal box is located on the side of housing for easy wiring
- Materials: Al

#### 5 Brackets

- Stainless steel mounting bracket is conveniently attached to the outer surface of the product
- Materials: STS316L

### A Variety of Selectable Light Source and Function Combinations

You can select from a variety of light sources for your work environment, condition, and purpose. Basic specifications are as follows.

- LED revolving type
- LED steady/flashing type
- xenon lamp strobe type
- Bulb revolving type

### Customization

- LED Strobe type
- LED revolving type

### Product Categories



Standard type

- Protection cage or terminal box not attached
- Terminals located inside the housing
- Use in environments that has low probability of damage to the lens due to external forces
- SH1/SH2 Series is available in this model



Built-in terminal box

- Equipped with a terminal box for easy wiring
- Use in environments that has low probability of damage to the lens due to external forces
- SH1T( )/ SH2T( ) is available in this model



Protection cage mounted type

- Equipped with a Protection cage
- Terminals located inside the housing
- Use in environments that has low probability of damage to the lens due to external forces
- SH1( )P/SH2( )P is available in this model



Terminal box and protection cage mounted type

- Equipped with a protection cage and a terminal box
- Terminal box enables easy wiring
- Damage to the lens from external forces can be prevented with protection cage
- SH1T( )P/ SH2T( )P is available in this model



SH1



SH2T

## PRODUCT SPECIFICATION

SH1 | SH2

**Materials** Lens-PC, Housing-AI, STS316L(SH1-SUS)  
Protection cage-ST316L, Reflector-Heat resistant ABS  
Bracket-ST316L

**Ambient operating temperature** -20°C to +50°C

**Protection rating** IP66







**Housing standard color** MUNSELL No. 7.5BG 7/2

**Cable entry** 1/2" PF

**Revolving speed** 120-140RPM






- Excellent light diffusion effect with multi faced reflector
- Adopts a special power transmission system that reduces noise and wear
- STS housing provides superior durability and corrosion resistance(SH1-SUS, SH1P-SUS)

### SH1 Bulb Revolving Beacons

Model number		Voltage	Current	Bulb			Certificates	Color
				Spec	Standard	Parts no		
SH1	Standard type	DC12V	1.55A	12V15W	G23 15S	17		 R-Red  A-Amber  G-Green  B-Blue
SH1-SUS	Standard type	DC24V	850mA	24V15W	G23 15S	18		
SH1P	Protection cage type							
SH1P-SUS	Protection cage type							
SH1T	Terminal box type	AC110V	200mA	12V15W	G23 15S	17		
SH1TP	Protection cage and terminal box type	AC220V	100mA	12V15W	G23 15S	17		

※ CE compliant: DC24V, CCS(SH1 / SH1P only)

### SH2 Bulb Revolving Beacons

Model number		Voltage	Current	Bulb			Certificates	Color
				Spec	Standard	Parts no		
SH2	Standard type	DC12V	1.55A	12V15W	G23 15S	17		 R-Red
SH2P	Protection cage type	DC24V	850mA	24V15W	G23 15S	18		 A-Amber
SH2T	Terminal box type	AC110V	200mA	12V15W	G23 15S	17		 G-Green
SH2TP	Protection cage and terminal box type	AC220V	100mA	12V15W	G23 15S	17		 B-Blue

※ CE compliant: DC24V

### SH1 | SH2 Bulb Revolving Beacons Specification Category and Products Weight Chart

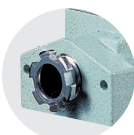
Type	SH1 Series	SH2 Series
Lens diameter	Φ125mm	Φ150mm
Standard	SH1 (1.61kg) SH1-SUS (2.05kg)	SH2 (1.77kg)
Built-in protection cage	SH1P (1.86kg) SH1P-SUS (2.30kg)	SH2P (2.06kg)
Built-in terminal box	SH1T (2.07kg)	SH2T (2.23kg)
Built-in protection cage & Terminal box	SH1TP (2.32kg)	SH2TP (2.52kg)

※ Product weight is based on AC type.

SH1/SH2 models are equipped with flexible connector, and SH1T/SH2T models are equipped with 15C nipple at cable entry.



Flexible connector



15C nipple

### Ordering Specification

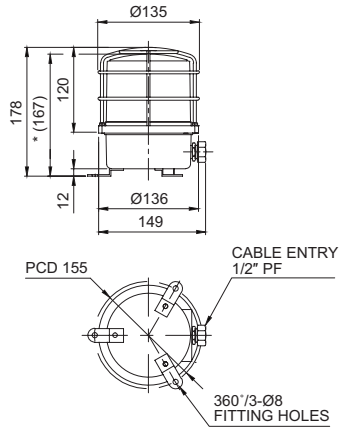
SH1T	-	220	-	R	-	SUS
[Model number]		[Voltage]		[Color]		[Housing materials]
SH1 / SH1P		12-DC12V 24-DC24V 110-AC110V 220-AC220V		R-Red A-Amber G-Green B-Blue		None - AI SUS - STS316L
SH1T / SH1TP SH2 / SH2P SH2T / SH2TP						

## SH1 / SH2 Series

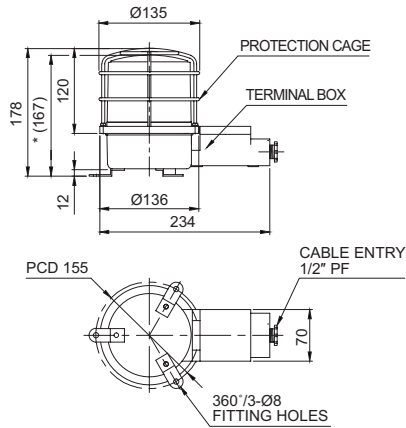
### Technical Diagram

Units: mm

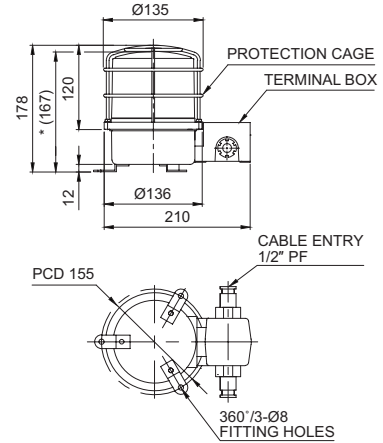
·SH1LRP(-SUS) / SH1LP(-SUS) / SH1SP(-SUS) / SH1P(-SUS)



·SH1TLRP / SH1TLP / SH1TSP / SH1TP

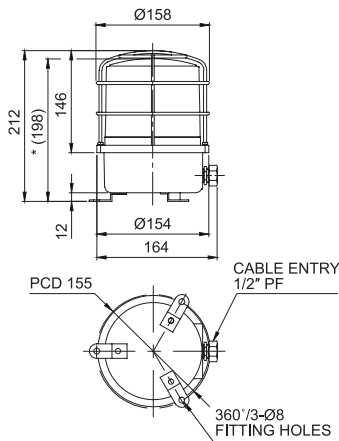


·SH1LR-2TP / SH1L-2TP / SH1S-2TP / SH1-2TP (Cable entry 2EA type)

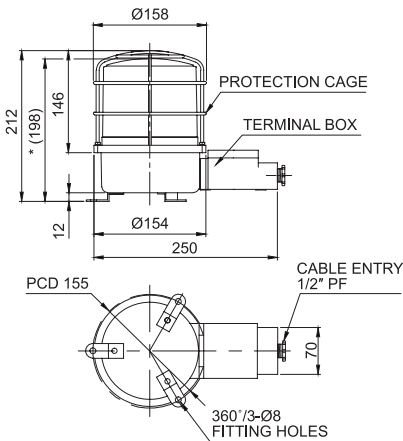


※ \*(167) represents SH1LR(-SUS)/ SH1L(-SUS)/SH1S(-SUS)/ SH1(-SUS), SH1TLR/ SH1TL/ SH1TS/ SH1T size without protection cage.

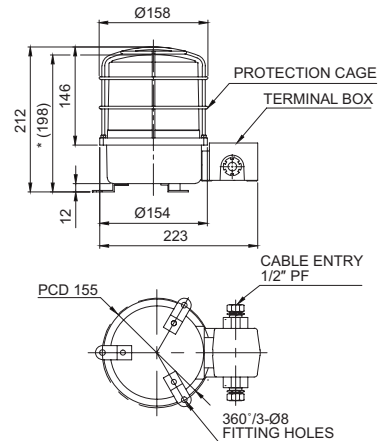
·SH2LRP / SH2LP / SH2SP / SH2P



·SH2TLRP / SH2TLP / SH2TSP / SH2TP



·SH2LR-2TP / SH2L-2TP / SH2S-2TP / SH2-2TP (Cable entry 2EA type)



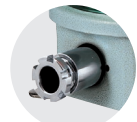
※ \*(198) represents SH2 Series size without protection cage.

### Wiring Instructions

· SH1(-SUS), SH1LR(-SUS), SH2, SH2LR : Black output line is negative(-).

### Customization

- 3/4" PF Cable entry  
Standard cable entry is 1/2" PF, 3/4" PF is customization
- Built-in cable gland type  
Flexible connector is equipped to the standard cable entry
- Brass housing product  
Color will be MUNSELL No. 7.5BG 7/2 when released.
- 2T type has 2 cable entries in the terminal box  
2 cable entries terminal box is a customized add-on.



Built-in cable gland



Brass housing product



2 cable entries terminal box model