



SM30
(Max.110dB)



SM40
(Max.116dB)

PRODUCT SPECIFICATION

SM30 | SM40

Materials SM30-Steel, SM40-ABS

Ambient operating temperature -25°C to +50°C

Housing standard color SM30-Red, SM40-Gray

Motor RPM SM30-10,000RPM, SM40- 7,000RPM

Insulation resistance 100MΩ(at 500VDC)

- SM30: Ø80mm compact structure with 110dB sound output
- SM40: Ø100mm compact structure with 116dB sound output

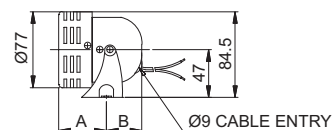
SM30 Miniature Motor Siren, Max.110dB

| Model number | Volume | Voltage | Current | Certificates | Weight | Rated time |
|--------------|-----------|---------|---------|--------------|--------|------------|
| SM30 | Max.110dB | DC12V | 5A | - | 0.22kg | 10 min |
| | | DC24V | 3A | | 0.22kg | |
| | | AC110V | 1.25A | | 0.42kg | |
| | | AC220V | 750mA | | 0.42kg | |

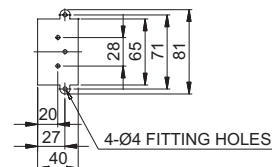
Technical Diagram

Units: mm

-SM30



| MODEL | A(mm) | B(mm) |
|---------|-------|-------|
| SM30-DC | 47 | 35 |
| SM30-AC | 72.5 | 32 |



Precautions for Use

Continuous operation rating time is 10 mins. Over 10 mins of continuous operation may cause motor damage. Please be careful.

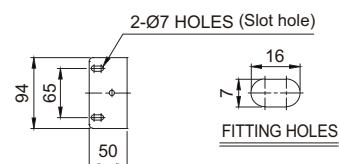
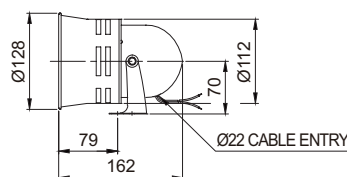
SM40 Miniature Motor Siren, Max.116dB

| Model number | Volume | Voltage | Current | Certificates | Weight | Rated time |
|--------------|-----------|---------|---------|--------------|--------|------------|
| SM40 | Max.116dB | DC12V | 4.5A | - | 0.53kg | 10 min |
| | | DC24V | 3A | | 0.53kg | |
| | | AC110V | 1A | | 0.68kg | |
| | | AC220V | 730mA | | 0.68kg | |

Technical Diagram

Units: mm

-SM40



Ordering Specification

| | | |
|----------------|---|------------|
| SM30 | - | 24 |
| [Model number] | | [Voltage] |
| SM30 | | 12-DC12V |
| SM40 | | 24-DC24V |
| | | 110-AC110V |
| | | 220-AC220V |



PRODUCT SPECIFICATION

SM200 | SM400

Materials SM200-Steel/Al, SM400-Steel/ABS
Ambient operating temperature -25°C to +50°C
Housing standard color Red
Motor RPM SM200-7,200RPM, SM400- 7,600RPM
Insulation resistance 100MQ(at 500VDC)

- SM200: Excellent durability and high volume are suitable for noisy environment
- SM400: 123dB high volume model suitable for long-distance audible signal in noisy environments



SM200
(Max.120dB)



SM400
(Max.123dB)

SM200 Motor Siren Max.120dB

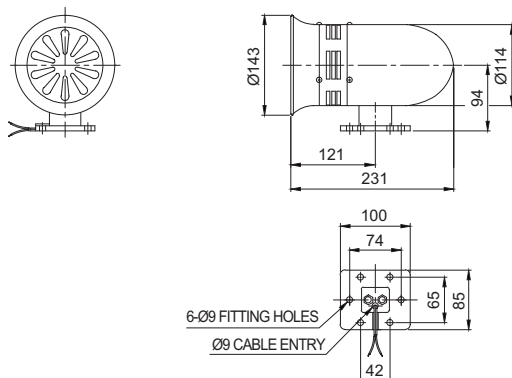
| Model number | Volume | Voltage | Current | Certificates | Weight | Rated time |
|--------------|-----------|---------|---------|--------------|--------|------------|
| SM200 | Max.120dB | DC24V | 11A | CE | 2.19kg | 10 min |
| | | AC110V | 2.85A | | 2.55kg | |
| | | AC220V | 1.5A | | 2.55kg | |

※ CE compliant : DC24V

Technical Diagram

Units: mm

·SM200



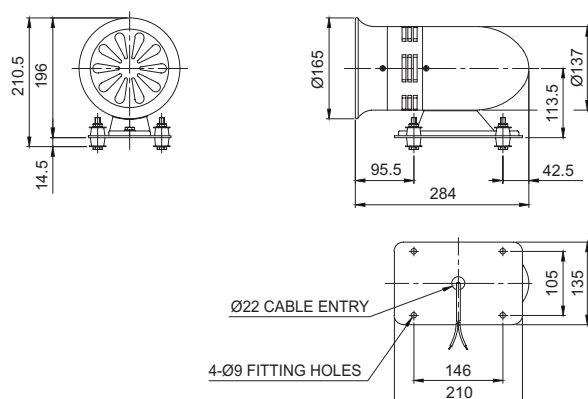
SM400 Motor Siren Max.123dB

| Model number | Volume | Voltage | Current | Certificates | Weight | Rated time |
|--------------|-----------|---------|---------|--------------|--------|------------|
| SM400 | Max.123dB | DC24V | 5.5A | - | 3.19kg | 3 min |
| | | AC110V | 4A | | 3.75kg | |
| | | AC220V | 3A | | 3.75kg | |

Technical Diagram

Units: mm

·SM400



Precautions for Use

The rated continuous operation time of motor siren SM200 is 10 minutes, and the rated continuous operation time of SM400 is 3 minutes. Please be careful as continuous operation outside of the rated time of each motor siren may cause damage to the motor.

Ordering Specification

| | | |
|----------------|---|------------|
| SM200 | - | 24 |
| [Model number] | | [Voltage] |
| SM200 | | 24-DC24V |
| SM400 | | 110-AC110V |
| | | 220-AC220V |