

## Ø45mm Ethernet LED Tower Lights

# ST45(M)L-ETN



Remote control through internet or local area network

### PRODUCT SPECIFICATION

ST45(M)L-ETN | ST56(M)EL-ETN  
ST80(M)EL-ETN

**Buzzer sounds** Max.90dB at 1m  
**Warning sounds** Max.85dB at 1m(Based on WS-Ch1)  
**Protection rating** IP23

- Software controls the steady/flashing function
- Please refer to [Pre-recorded Sound Tone and Sound Combination Chart] for detailed information about selectable sound patterns.
- Ethernet port and power cable are provided with product
- LED Module Standard Operation: 2 layers will operate at the same time



ST45(M)L-ETN Series

### ST45(M)L-ETN Ø45mm Ethernet LED Tower Lights

Model number	Layers	Voltage	Certificates	Color
ST45L-ETN ST45ML-ETN	1	DC12V DC24V AC110V-220V	CE	● R-Red
	2	DC12V DC24V AC110V-220V		● R-Red ● G-Green
	3	DC12V DC24V AC110V-220V		● R-Red ● A-Amber ● G-Green
	4	DC12V DC24V AC110V-220V		● R-Red ● A-Amber ● G-Green ● B-Blue
	5	DC12V DC24V AC110V-220V		● R-Red ● A-Amber ● G-Green ● B-Blue ○ W-White

### Light source/signal sound current(based on 1 layer)

Voltage	DC12V	DC24V	AC110V-220V
Light source current(1 layer)	230mA	160mA	Max.60mA
Signal sound current	350mA	230mA	Max.85mA

### Customization

- Customized color arrangements
- Customized pole length available
- Wall mount bracket



Wall mount bracket TWS45



Wall mount bracket TWA45

### Ordering Specifications

ST45L-ETN-WS	3	24	RAG	LW18
[Model number]	[Layers]	[Voltage]	[Color]	[Bracket]
ST45L-ETN-BZ	1-1 Layer	12-DC12V	● R-Red	None-Standard Bracket -LB18 -LW18 -QZ18 -SZ18
ST45L-ETN-WS	2-2 Layers	24-DC24V	● A-Amber	
ST45L-ETN-WM	3-3 Layers	110/220-AC110V-220V	● G-Green	
ST45L-ETN-WA	4-4 Layers		● B-Blue	
ST45ML-ETN-BZ	5-5 Layers		○ W-White	
ST45ML-ETN-WS				
ST45ML-ETN-WM				
ST45ML-ETN-WA				

Mount brackets are available for the pole mount type(ST45L-ETN series) only.

### Mounting bracket

Standard	LB18	LW18	QZ18
Steel	Steel	ABS	ABS
SZ18	QL18	SL18	
AI	ABS	AI	

※ Please refer to [Tower Light Mounting Bracket] on this catalogue for detailed dimensions

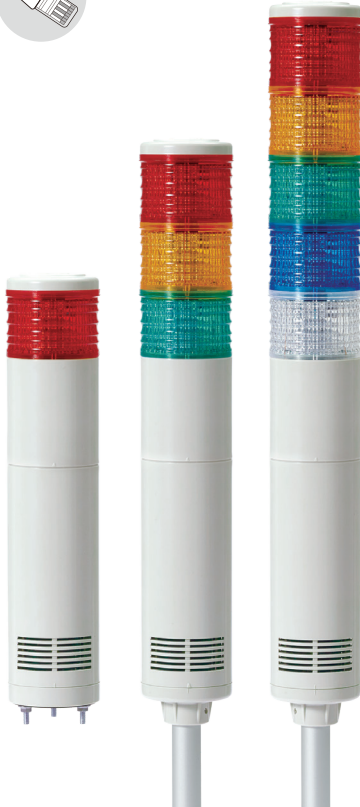
### Wiring Instructions

- Apply properly rated voltage through the POWER CABLE
- Connect the RJ45 connector of the UTP cable into the PC's Ethernet port or router
- External power line :  
UL1015 AWG18(0.75sq)×2C 400mm
- Power plug will be provided in case of AC type
- UTP cable : Category 5 cable
- DC type : Black output line is negative(-).

## Ø56mm Ethernet LED Tower Lights

# ST56(M)EL-ETN

Remote control through internet or local area network



ST56(M)EL-ETN Series

### ST56(M)EL-ETN Ø56mm Ethernet LED Tower Lights

Model number	Layers	Voltage	Certificates	Color
ST56EL-ETN ST56MEL-ETN	1	DC12V DC24V AC110V-220V		● R-Red
	2	DC12V DC24V AC110V-220V		● R-Red ● G-Green
	3	DC12V DC24V AC110V-220V		● R-Red ● A-Amber ● G-Green
	4	DC12V DC24V AC110V-220V		● R-Red ● A-Amber ● G-Green ● B-Blue
	5	DC12V DC24V AC110V-220V		● R-Red ● A-Amber ● G-Green ● B-Blue ○ W-White

※ KC Certification: AC220V(ST56EL-ETNS)

#### Light source/signal sound current(based on 1 layer)

Voltage	DC12V	DC24V	AC110V-220V
Light source current(1 layer)	240mA	165mA	Max.65mA
Signal sound current	350mA	230mA	Max.85mA

#### Wiring Instructions

- Apply properly rated voltage through the POWER CABLE
- Connect the RJ45 connector of the UTP cable into the PC's Ethernet port or router
- External power line - UL1015 AWG18(0.75sq) x 2C 400mm
- Power plug will be provided in case of AC type
- UTP cable: Category 5 cable
- DC type : Black output line is negative(-).

#### Customization

- Customized color arrangement available
- 70mm lens height(Standard 40mm)
- Customized pole length available
- Wall mount bracket
- KC Certification is available (Model number: ST56EL-ETNS, AC220V)



#### Mounting bracket

Standard	LB18	LW18	QZ18
Steel	Steel	ABS	ABS
SZ18	QL18	SL18	
AI	ABS	AI	

※ Please refer to [Tower Light Mounting bracket] on this catalogue for detailed dimensions

#### Ordering Specifications

ST56EL-ETN-WS	3	220	RAG	QZ18
[Model number]	[Layers]	[Voltage]	[Color]	[Bracket]
ST56EL-ETN-BZ	1-1 Layer	12-DC12V	● R-Red	None-Standard
ST56EL-ETN-WS	2-2 Layers	24-DC24V	● A-Amber	Bracket
ST56EL-ETN-WM	3-3 Layers	110/220-AC110V-220V	● G-Green	-LB18 -LW18
ST56EL-ETN-WA	4-4 Layers		● B-Blue	-QZ18 -SZ18
ST56MEL-ETN-BZ	5-5 Layers		○ W-White	-QL18 -SL18
ST56MEL-ETN-WS				
ST56MEL-ETN-WM				
ST56MEL-ETN-WA				

Mount brackets are available for the pole mount type(ST56EL-ETN series) only.

## Ø80mm Ethernet LED Tower Lights

# ST80(M)EL-ETN



Remote control through internet or local area network

### ST80(M)EL-ETN Ø80mm Ethernet LED Tower Lights

Model number	Layers	Voltage	Certificates	Color
ST80EL-ETN ST80MEL-ETN	1	DC12V DC24V AC110V-220V	-	● R-Red
	2	DC12V DC24V AC110V-220V		● R-Red ● G-Green
	3	DC12V DC24V AC110V-220V		● R-Red ● A-Amber ● G-Green
	4	DC12V DC24V AC110V-220V		● R-Red ● A-Amber ● G-Green ● B-Blue
	5	DC12V DC24V AC110V-220V		● R-Red ● A-Amber ● G-Green ● B-Blue ○ W-White



ST80(M)EL-ETN Series

### Light source/signal sound current(based on 1 layer)

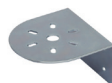
Voltage	DC12V	DC24V	AC110V-220V
Light source current(1 layer)	260mA	180mA	Max.70mA
Signal sound current	350mA	230mA	Max.85mA

### Wiring Instructions

- Apply properly rated voltage through the POWER CABLE
- Connect the RJ45 connector of the UTP cable into the PC's Ethernet port or router
- External power line - UL1015 AWG18(0.75sq) x 2C 400mm
- Power plug will be provided in case of AC type
- UTP cable: Category 5 cable
- DC type : Black output line is negative(-).

### Customization

- Customized color arrangements available
- 70mm lens height(Standard 40mm)  
(Model number: ST80(M)L-ETN)
- Customized pole length available
- Wall mount bracket



Wall mount bracket  
TWS80



Wall mount bracket  
TWA80

### Ordering Specifications

ST80EL-ETN-WS	3	24	RAG	QZ24
[Model number]	[Layers]	[Voltage]	[Color]	[Bracket]
ST80EL-ETN-BZ	1-1 Layer	12-DC12V	● R-Red	None-Standard Bracket -LB24 -LW24 -QZ24 -SZ24 -QL24 -SL24
ST80EL-ETN-WS	2-2 Layers	24-DC24V	● A-Amber	
ST80EL-ETN-WM	3-3 Layers	110/220-AC110V-220V	● G-Green	
ST80EL-ETN-WA	4-4 Layers		● B-Blue	
ST80MEL-ETN-BZ	5-5 Layers		○ W-White	
ST80MEL-ETN-WS				
ST80MEL-ETN-WM				
ST80MEL-ETN-WA				

### Mounting bracket

Standard	LB24	LW24	QZ24
Steel	Steel	ABS	ABS
SZ24	QL24	SL24	
AI	ABS	AI	

※ Please refer to [Tower Light Mounting Bracket] on this catalogue for detailed dimensions

Mount brackets are available for the pole mount type(ST80EL-ETN series) only.

# ST-ETN Series



Technical Diagram

Units : mm

